

3 Rivers Yakima B02

3 Rivers SC
Yakima, WA

B02 total strength=246
attack=0.32 defense=0.07

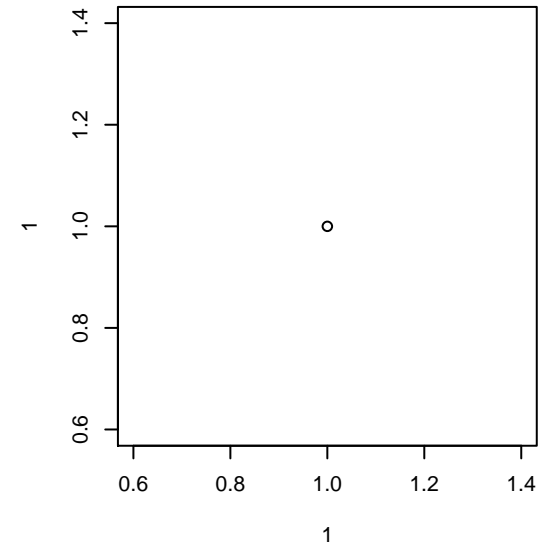
fall league = RCL B02 Div 5, Spr RCL B02 Div :

notes= Ceniceros 2013

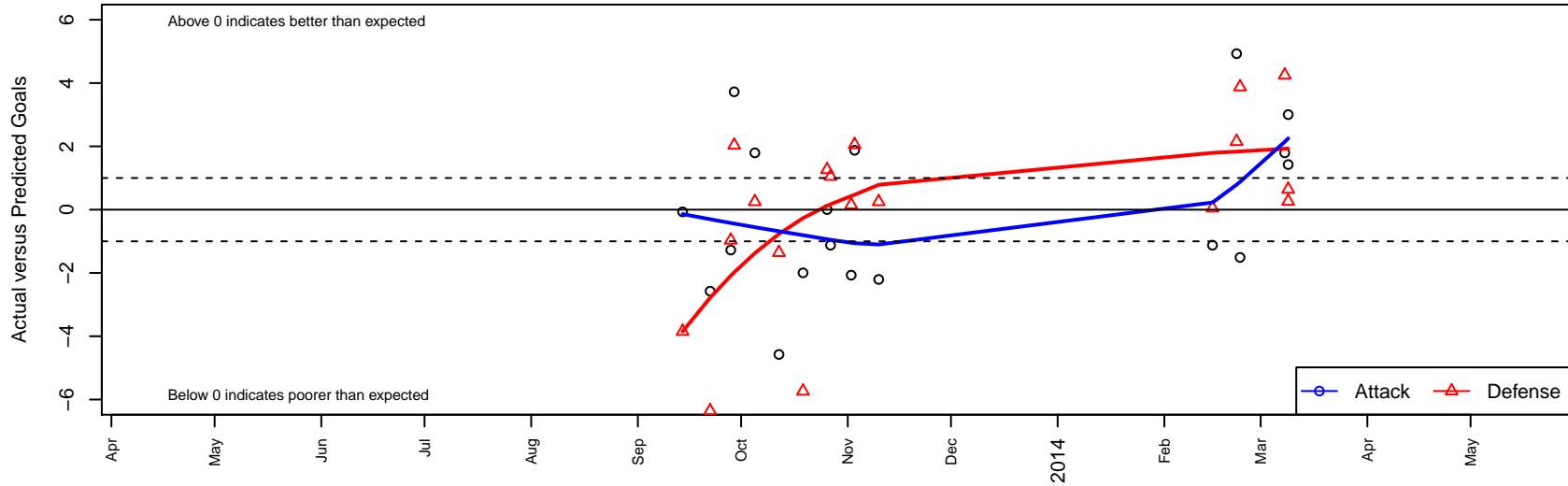
alt names used:

Three Rivers – Yakima Ceniceros

Venues played:
RCL B02 Div 5
Spr RCL B02 Div 5



3 Rivers Yakima B02
Dots are actual minus expected GF (blue circles) and GA (red triangles).
Blue line is smoothed change in attack strength. Red is smoothed change in defense strength.



	date	home		away		venue	pred.home	pred.away
24223	2014-03-09	Snohomish United Red B02	3	3 Rivers Yakima B02	6	Spr RCL B02 Div 5	3.3	3.0
24225	2014-03-09	3 Rivers Yakima B02	6	PacNW Gold B02	2	Spr RCL B02 Div 5	4.6	2.6
23886	2014-03-08	3 Rivers Yakima B02	4	FC Alliance C B02	1	Spr RCL B02 Div 5	2.2	5.2
23201	2014-02-23	Eastside FC Grey B02	2	3 Rivers Yakima B02	1	Spr RCL B02 Div 5	5.9	2.5
22934	2014-02-22	3 Rivers Yakima B02	8	Slammers White B02	0	Spr RCL B02 Div 5	3.1	2.2
22470	2014-02-15	FWFC White B02	2	3 Rivers Yakima B02	3	Spr RCL B02 Div 5	2.1	4.1
18020	2013-11-10	FC Alliance C B02	5	3 Rivers Yakima B02	0	RCL B02 Div 5	5.2	2.2
17167	2013-11-03	FWFC White B02	0	3 Rivers Yakima B02	6	RCL B02 Div 5	2.1	4.1
16637	2013-11-02	Slammers White B02	2	3 Rivers Yakima B02	1	RCL B02 Div 5	2.2	3.1
16184	2013-10-27	3 Rivers Yakima B02	3	FWFC White B02	1	RCL B02 Div 5	4.1	2.1
15754	2013-10-26	3 Rivers Yakima B02	3	Snohomish United Red B02	2	RCL B02 Div 5	3.0	3.3
14818	2013-10-19	Snohomish United Red B02	9	3 Rivers Yakima B02	1	RCL B02 Div 5	3.3	3.0
13763	2013-10-12	PacNW Gold B02	4	3 Rivers Yakima B02	0	RCL B02 Div 5	2.6	4.6
12730	2013-10-05	3 Rivers Yakima B02	4	FC Alliance C B02	5	RCL B02 Div 5	2.2	5.2
12273	2013-09-29	3 Rivers Yakima B02	5	WA Rush Nero B02	2	RCL B02 Div 5	1.3	4.0
11826	2013-09-28	3 Rivers Yakima B02	0	WA Rush Nero B02	5	RCL B02 Div 5	1.3	4.0
11358	2013-09-22	3 Rivers Yakima B02	2	PacNW Gold B02	9	RCL B02 Div 5	4.6	2.6
9877	2013-09-14	3 Rivers Yakima B02	3	Slammers White B02	6	RCL B02 Div 5	3.1	2.2